

## GENERAL

- KAKKU Power pack panels are sheet steel enclosed floor mounting and free standing type, having two compartments. The right compartment is meant for transformer, resistance and in the left compartment, SFU, Fuse, contactors, relays, rectifier bridges are mounted.

## ENCLOSURE

- The standard enclosure for rectifier unit and transformer unit confirms to IP-54 degree of protection.

## RECTIFIER

- The rectifier used have high capacity to sustain over voltage and high current transients.

## RESISTORS

- Hexagonal resistors are used in the resistor unit.  
Hexagonal resistors are of very high thermal capacity, compact in size and conveniently replaceable.

## COMPONENTS

- Contactors, SFU, fuses, time delay relays and MCB of reputed make with proven performance and suitable ratings are used in the rectifier panels. The standard rectifier panels are provided with silicon rectifiers

## APPLICATION

- KAKKU Power pack panels are used in conjunction with having AC mains supply e.g. EOT Cranes, Gantry cranes, Hydra applications etc.

## TYPE OF PANEL

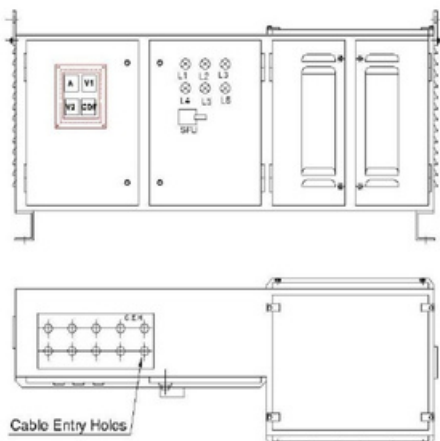
- KAKKU Power pack Rectifier Panels are manufactured for operation of one or more rectangular magnets and single circular magnets. Panels can be supplied for other combinations upon specific requirements.

## SUPPLY VOLTAGE

- The Power Pack Rectifier Panels is designed either for common supply voltage (for main & control circuits) 415 V AC 3phase 50Hz/60 Hz for Export purpose

## OPTIONAL FEATURES

- Discharge panel for fast discharge of electromagnet.
- Battery backup panel with audio visual alarm..
- Battery charger panel float cum boost with audio visual alarm.
- CDF Monitor with audio visual alarm for maintaining duty cycle of electro magnet.
- Under crane monitor with audio visual alarm
- Control post for indication in crane cabin.



**MAGNET PANEL**