

## ROTARY GEARED LIMIT SWITCH SERIES KRG – 01

### SPECIAL FEATURES

- Contacts with high quality silver alloy tips having arc-retarding and anti-welding properties.
- Provided with specially treated oil resistant rubber gasket to make the switch completely dust proof.
- Ease of maintenance.
- Reliability of performance.
- Resists extreme shocks & vibratory conditions.
- Flexible contact sequence and ease of adjustment at site.
- Contacts with self wiping action (to wipe off carbon deposit), minimises the need of frequent maintenance.

Protection	: IP – 55
Terminals	: Suitable for conductor size 2.5mm <sup>2</sup> .
No. of contacts	: 2
Gear ratio	: 1 : 48 or 1 : 60
Cable entry	: 2 Nos. of 19mm conduit.
Rated insulation voltage	: 500V AC/ DC
Rated thermal current	: 40A
Rated current at 500V AC, cos $\phi > 0.4$	
a) Making	: 50A
b) Breaking	: 10A

### SELECTION CHART

Type	Gear Ratios	Max. No. of Spindle Revolutions for Cam Adjustment.
KRG – 01A	1 : 48	39
KRG – 01B	1 : 60	48

### APPLICATION

KAKKU spindle type Rotary Geared Limit Switches series KRG-01 are used in control circuits of cranes, hoists, winches and other drive mechanism where two way travel of the mechanism is to be limited within certain well defined predetermined positions. The limit switch can be coupled with reduction gear, rope drums etc.

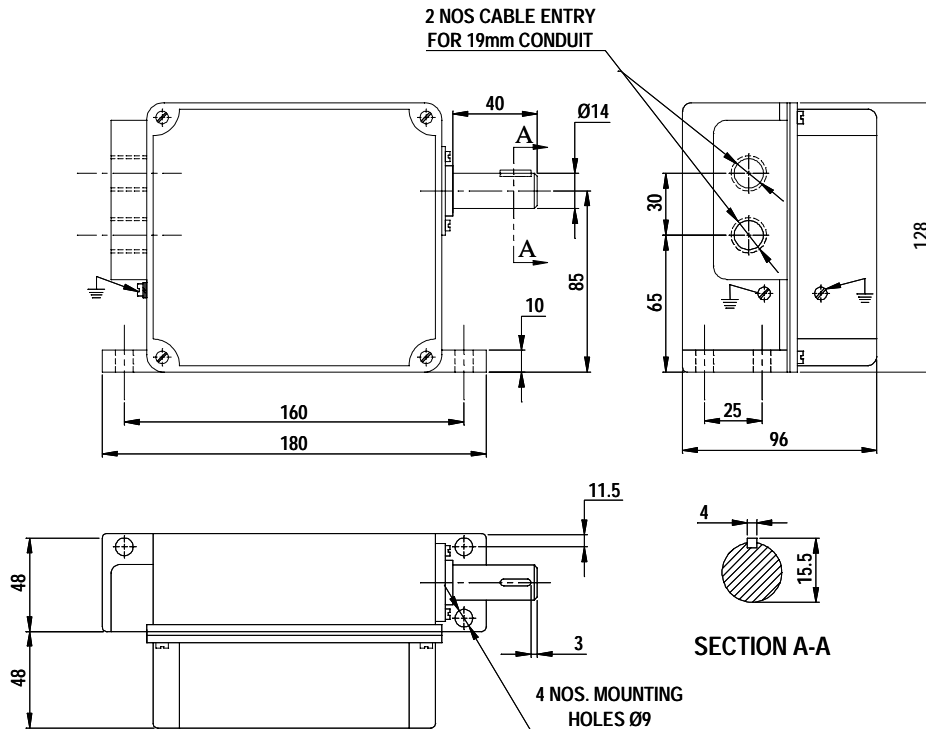
### TECHNICAL DATA

Ambient temperature	: – 10 to + 60°C
Mounting	: Surface
Housing	: Sturdy Cast Iron housing with detachable Aluminium cover.

### OPTIONAL EXTRAS

- Enclosure upto IP : 65.
- Epoxy paint for special applications.

SERIES KRG – 01  
Dimensions (mm)



*Product improvement is a continuous process at KAKKU. Hence data given in this catalogue is subject to revision without notice.*

**Electronic & Power Control Co.**

(AN ENTERPRISE OF KAKKU E & P CONTROL (P) LTD.)  
1, Industrial Estate, Bhilai 490 026,  
(Chhattisgarh) INDIA.



Symbol Of Reliability

Tel : 91-788-2382610, 2382297  
Fax : 91-788-2381797, 2321836  
E-mail : kakku\_bhilai@yahoo.com