

**GENERAL :** KAKKU Electric Wire Rope Hoists are suitable for medium and heavy duty operations. Our Hoists are modern in design incorporating many special features.

**DESIGN :** The Hoists generally conform to IS : 3938 and comply with the requirements of factory Act.

**CONSTRUCTION :** The Hoists are of sturdy steel fabricated construction and modular type. Each independent unit such as Gear Box, Hoist Motor Brake, Trolley Drive, Electrical Gear, etc. is easily accessible for maintenance and repair.

**MOTORS :** Hoist Duty Sq. cage induction motors totally enclosed IP : 55 with Class-F insulation suitable for frequent reversals and braking and generally conforming to IS:325 are provided.

**BRAKE :** The Hoist motor is fitted with a "Fail Safe" Electromagnetic Disc or Shoe brake. The Brake acts automatically on interruption of Power Supply, whether accidental or Intentional.

**GEARS :** A triple gear reduction transmits the drive for the Hoist motor to the rope drum. High strength Helical and Spur of En8 and En24 material are produced on gear hobbing and gear shaping machines. The gears run in a totally enclosed grease packed gear box giving positive lubrication to all gear parts and ball bearings.

**ROPE DRUM :** The rope drum is of sturdy construction fabricated from

mild steel pipe and is grooved to take the full lift. Large drum diameter to rope ratios reduces wear and rope fatigue. A special type rope guide fitted to the rope drum guides the rope to the grooves.

**TROLLEY :** Steel Trolley wheels mounted on ball bearings are fitted to the mild steel side plates, each trolley is adaptable for use with wide range of I-beams.

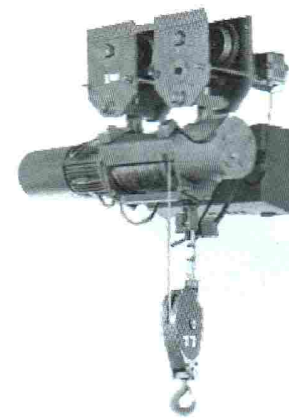
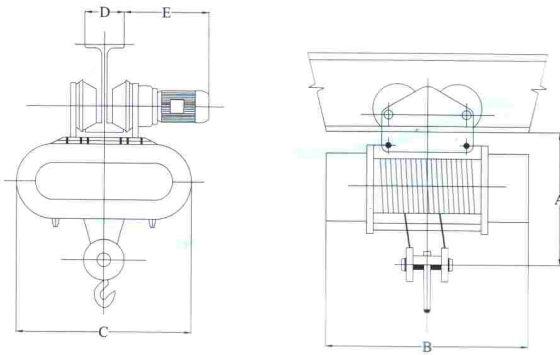
**LIMIT SWITCHES :** Snap action type limit switches are provided to avoid over hoisting and over lowering.

**CONTROL GEAR :** Control is by heavy duty direct on reversing type air brake contractors which are electrically interlocked for safety. The contactors, MCB, low voltage transformer etc. are housed in an easily removable fabricated steel cover or separate panel. Main components are of Telemecanique /L & T/Cutler Hammer make.

**PUSH BUTTON PENDANT :** Low voltage push buttons operating on 110 Volts A.C. ensure safety to the operator should short circuit or grounding occur.

**POWER SUPPLY :** All Switch Gears are suitable for operation on 400-440 Volts. 3 Phase 50 Hz. A.C. Supply.

**SPECIAL HOISTS :** Micro speed, flexible trolley type for curved monorail, extended trolley type. Higher heights of lift, true vertical lift and Heavy duty types are available in our range.



Sl. No.	Capacity in Kgs.	Height of Lift Mtr.	Lifting Speed M.P.M.	Motor H.P.	A	B	C	D Min	E	Min. monorail Rad. Mts.	Weight (Approx.) Kgs.
1	500	9	6	1.0/0.25	670	795	470	100	450	2.5	180
2	1000	6	3	1.0/0.25	550	795	470	100	450	2.5	180
3	1000	12	6	2.0/0.25	825	915	520	100	450	2.5	210
4	2000	6	3	2.0/0.25	700	915	520	100	450	2.5	230
5	2000	12	6	4.0/0.5	1050	970	705	125	470	3.2	350
6	3000	6	3	3.0/0.5	920	970	705	125	470	3.2	375
7	3000	12	6	5.0/0.5	1250	970	705	125	470	3.2	425
8	5000	6	3	5.0/0.5	920	970	705	125	470	3.2	475
9	5000	12	6	10.0/1.0	1450	1130	950	140	570	3.6	960
10	7500	7	3	7.5/0.75	1100	1100	800	140	570	3.6	700
11	7500	12	4	10.0/1.0	1500	1200	1100	180	570	4.2	1600
12	10000	7	3	10.0/1.0	1200	1130	950	140	570	3.6	980
13	10000	12	5	15/1.5	1750	1350	1400	210	630	4.6	1900
14	16000	7	2	10.0/1.5	1500	1300	1300	180	630	4.2	1600
15	16000	12	5	20.0/2.0	2400	1800	1700	420	630	4.6	3100
16	20000	7	2.5	15.0/1.5	1550	1350	1400	210	630	4.6	2000
17	25000	7	2.5	20.0/1.0x2	1750	1600	1500	420	630	5.2	2400
18	32000	7	2.5	25.0/1.5x2	2200	1800	1700	420	630	5.8	3200
19	40000	7	1.6	20/1.5x2	2350	2200	2100	450	950	Twin Trolley	3950
20	50000	7	1.6	25/2x2	2650	2600	2500	480	1050	Twin Trolley	4350

Note : 1) All dimensions and data are subject to change without notice.  
 2) Above parameters are for class II, 4/1 and 2/1 falls and 6m / 12m / 7m lift.